

BASIC CAN

WALL LAMP

UP/DOWN IP65



FITTING INFORMATION

Body

Material : Aluminium
Colour Options : Flat Black or Flat White powder coat
Size : Ø60 x W90 x H210mm
Cleaning : Damp cloth with mild detergent

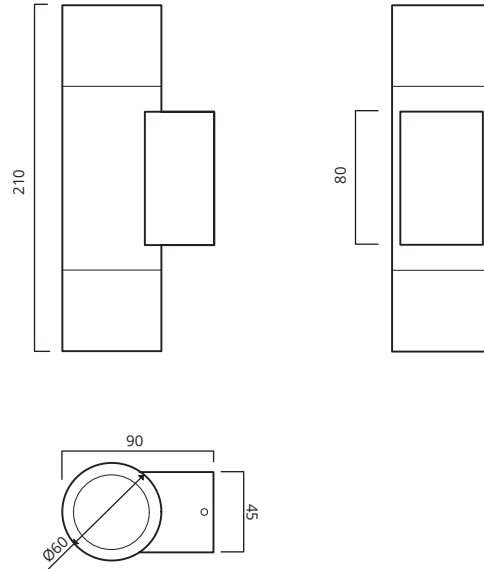
Mounting

Wall mount footprint : W45 x H80mm

Application

Indoor, outdoor or wet area (IP65)

DIMENSIONAL DRAWING



TECHNICAL DATA

Lamp

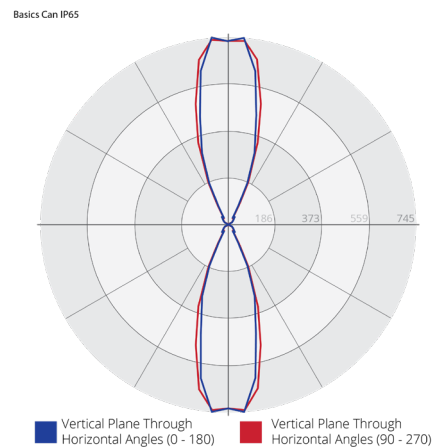
2 x Retrofit LED lamp, GU10 base (35W max)

Switching & Dimming

Switching: Hardwired to power supply, wall switched
Dimming: Subject to lamp compatibility

.IES & .RFA files upon request

PHOTOMETRIC DATA



ORDER INFO

Product range - Model number - Finish/Colour

Finish	Matt Black powder coat	Matt White powder coat
Basic Can wall light	XX-W28-115	XX-W28-116

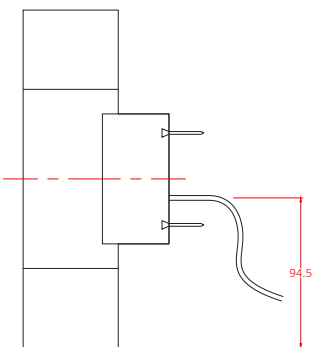


BASIC CAN

WALL LAMP

UP / DOWN IP 65

Featuring an IP65 aluminium housing in choice of flat black or flat white powder coat finish.



ism

www.ismobjects.com.au

©2024
Specifications are subject to change without notice.
Contact: sales@ismobjects.com.au